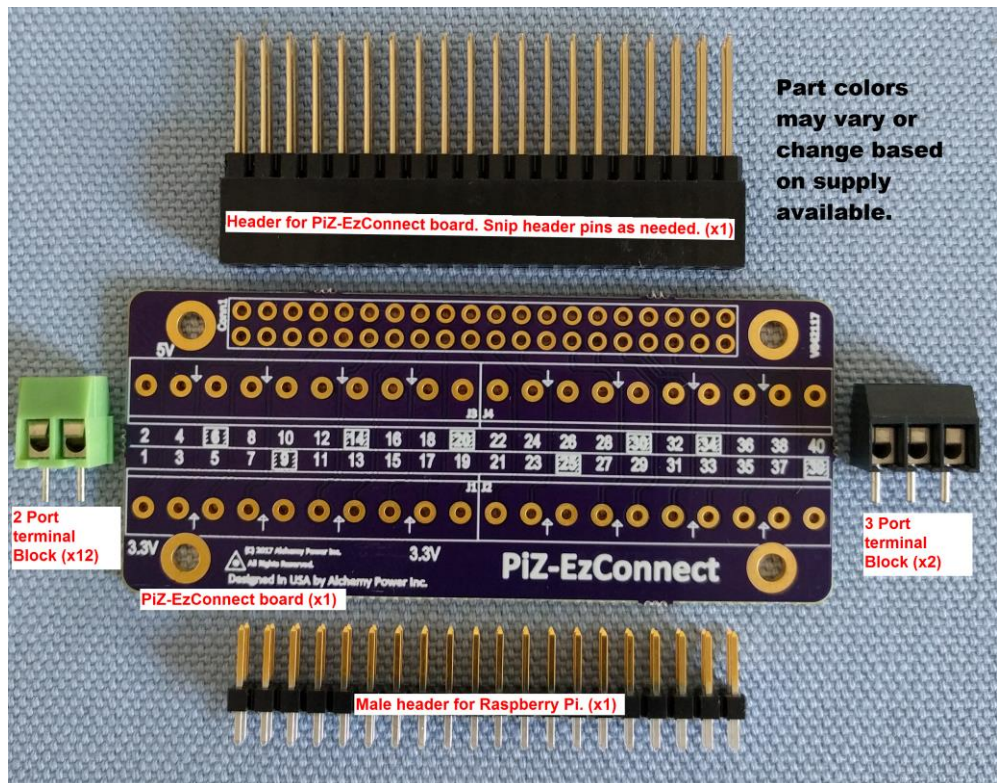


## Key Features

- Kit to build your own GPIO connector for a Raspberry Pi.
- Soldering required.
- Includes necessary headers for the Raspberry Pi as well as header for connecting as a HAT.
- All Pins are clearly marked.
- Can be used with Raspberry Pi Clones to other flat ribbon cables for prototyping.

# PiZ-EzConnect KIT

PiZ-EzConnect KIT allows you to customize and build your own GPIO connector for a Raspberry Pi or a Pi-clone (e.g. Asus Tinker, PiOrange etc.) All 40 pins used by the Raspberry Pi are exposed. Soldering is required.



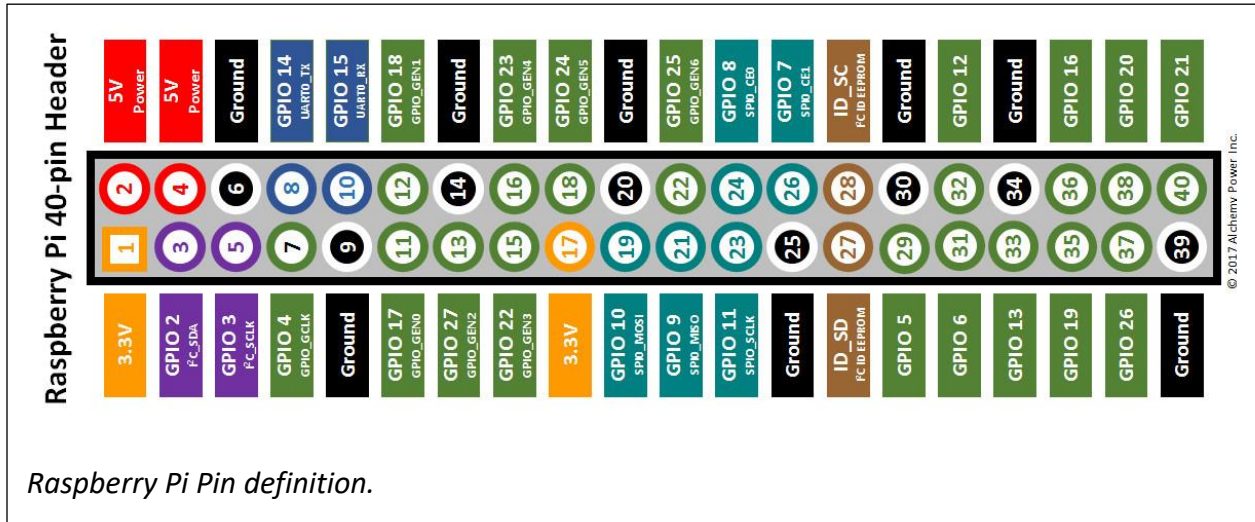
KIT includes:

- Twelve, two port terminal blocks
- Two three port terminal blocks
- One 2x20 male header pins for Raspberry Pi without a male header (e.g. Pi Zero or Pi Zero W)
- One Pi-EzConnect board
- One Pi male/female header pin

The picture above shows what is included in the kit.

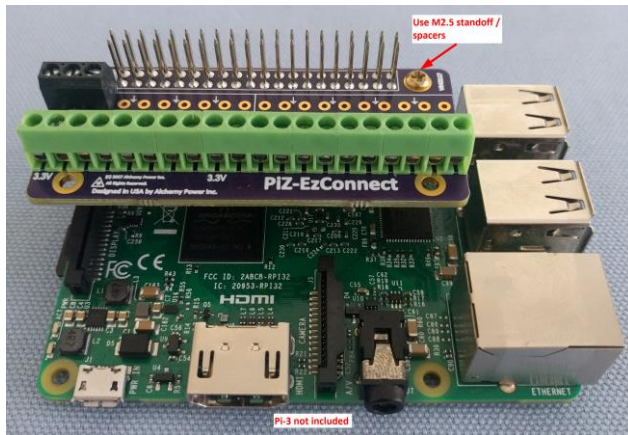
Using a PiZ-EzConnect board, it is possible to connect multiple sensors and other electronic devices / components to multiple GPIOs on a Raspberry Pi. PiZ-EzConnect-KIT makes it possible to customize it to suite your needs.

With PiZ-EzConnect-KIT, you can leverage the full capability of a Raspberry Pi. Soldering is required.

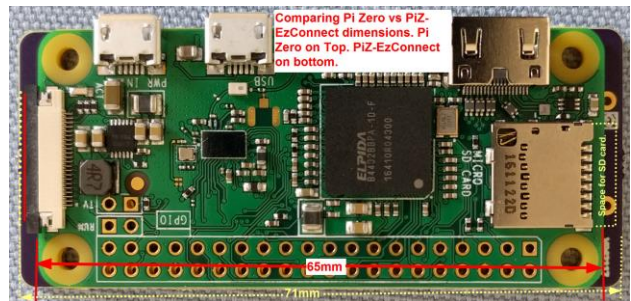


Raspberry Pi Pin definition.

The Pin definitions for a Raspberry Pi are shown above. PiZ-EzConnect replicates the above connections.



Pi 3 with PiZ-EzConnect.



Comparing Pi Zero and PiZ-EzConnect dimensions.

# Specifications

## General Information

Model Number: PiZ-EzConnect

Protection: none, passive connector block to Raspberry Pi or other 40 pin connector products.

Pin connections: Displayed on the board.

Header connections – can use 0.1” or 2.54 mm spaced headers, male or female.

Standoff connections – matches Raspberry Pi model A+, B+ and Pi 2. Recommend 10mm brass standoffs for Pi.

Other information – additional 3.5mm terminal blocks can be used.

## Dimension/Weight:

Board Dimensions: 71 mm x 30mm.

Board thickness: 1.7 mm.

Terminal Blocks: 9mm from base of the board.

Weight: 32 grams (appx 1.2 ounces)

Raspberry Pi connector header dimensions:

Female pins – 8.5mm. Male pins – 11 mm.

Male pins can be cut off if not used.

## Safety:

Passive board. Safety is provided by device connected to PiZ-EzConnect. No CE or UL testing required.

## Warranty:

90 days parts and labor limited warranty.

## Recommended Accessories:

Most accessories can be purchased from several web sites or online stores.

**Pi-EzConnect** – ideal for use with Pi 2, Pi 3.

Provides for connections as well as solder points for all GPIO pins. Also provides a mini breadboard. Amazon Part ID [B01FE9EQ88](#)

**Standoff / Spacer** – M2.5 standoff, 12-15 mm long. Amazon Part ID [B01M71WKMS](#)

**Pi-16ADC** – 16 channel, 16-bit Analog to Digital Converter. Amazon Part ID [B01N7J31C1](#)

**Pi-BB** – Bread board ideal for use with a Raspberry Pi. Amazon Part ID [B06Y1GFGXC](#)

**PiZ-EzConnect** – Similar to this KIT, however some terminal blocks are pre-soldered. .

Amazon Part ID [B0725JLNHX](#)

*Please follow recommended safety regulations when soldering or using electronic components or making connections or connecting power supplies to Raspberry Pi.*

*™ Adafruit is a registered trademark of Adafruit Industries, LLC.*



## Alchemy Power Inc.

2098 Walsh Avenue, Suite A,

Santa Clara, CA 95050-2544

Phone: 650.823.2316

Email: [sales@alchemypower.com](mailto:sales@alchemypower.com)

[www.alchemy-power.com](http://www.alchemy-power.com)